

SCREEN SPACE

5 - 19 December 2015

Sign/Action

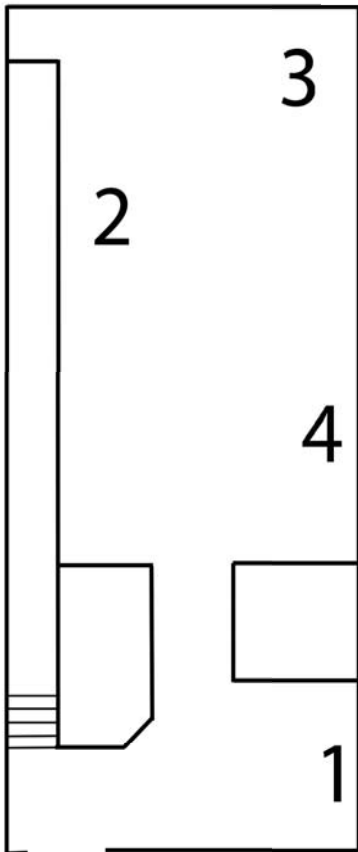
Benjamin Forster, Christopher LG Hill,
Adelle Mills, Rebecca Ross, Jacqui Shelton,
Giulio Squillacciotti, Yang ZhenZhong

Curated by Kyle Weise

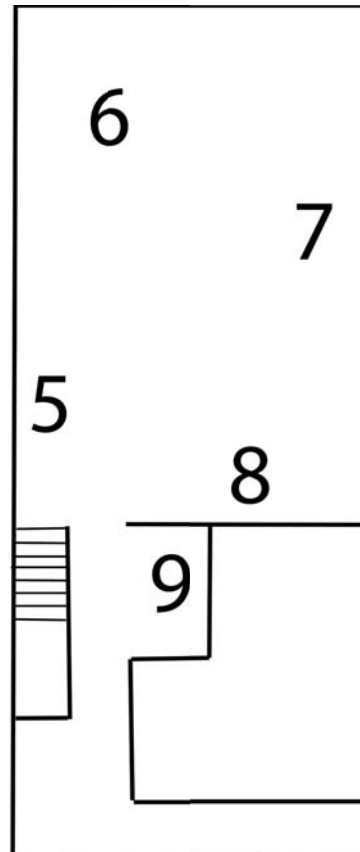
Communication implies potential mis-communication. Utterances combine, confuse, exceed. Systems form, deteriorate, evolve. Exchanges accumulate debts, traces, remainders. Signs are actioned, translated, misplaced. Actions are interpreted, collected, organised. Words, things, movements: gather, circulate, disperse.

List of Works

Ground Floor



First Floor



1. Yang Zhenzhong
Spring Story, 2003
Single-channel video, sound, 13'05"

2. Benjamin Forster
Traces of the Museum of Contemporary Art Australia
Aspect D: The M Drive (19:02 19 December 2013), 2015
Aspect A: Surveillance (11:55am to 1:17pm 19 December 2013), 2015
Custom software. Duration: ∞

3. Giulio Squillacciotti
Zimmerreise (Viaggio dalla stanza - A Room Journey), 2010.
Super8 film on Cinemascope 2:35, Audio Stereo, 2'46", Austria.

4. Rebecca Ross
Marina/Marina, 2015
Single channel video 2'37"

5. Adelle Mills
Ear Piece, 2015
Single-channel video, sound.

6. Jacqui Shelton
more politely than shaking hands, 2015
Single channel digital video with sound, trolley, mind map, photocopy,
charcoal.

7. Adelle Mills
Copier, follower, reader, 2014.
Single-channel video, sound. 11'21".

8. Christopher LG Hill
Giant Otters, 2015, Jpeg
Horsetail, 2015, Digital video, 57'19".

9. Yang Zhenzhong
Straight Line, 2012
Single-channel video, sound, 7'22".

Sign/Action will be accompanied by a catalogue, available soon and distributed in print and pdf. This will include essays by Rachael Haynes, Stephen Palmer, Tony Thwaites and Kyle Weise.

Please email info@screenspace.com for further information

Screen Space is an independent not-for profit art gallery that opened in Melbourne's CBD in September 2010. Screen Space is rent-free for artists and curators and has recently expanded to include a second exhibition space. The gallery has a curatorial focus on exhibitions that incorporate screen technology or which engage with screen culture, regardless of medium. The Screen Space 2015 program includes exhibitions by local, interstate and international artists and curators.



Screen Space Ltd. | 30 Guilford Lane, Melbourne, Victoria 3000 Australia
www.screenspace.com | info@screenspace.com
+61 3 9012 5351 | ABN 23 142 769 739
Thursday to Saturday 12 - 6